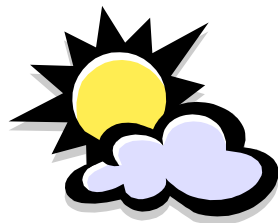




To WP3:

„AQ- & MET-Measurements“



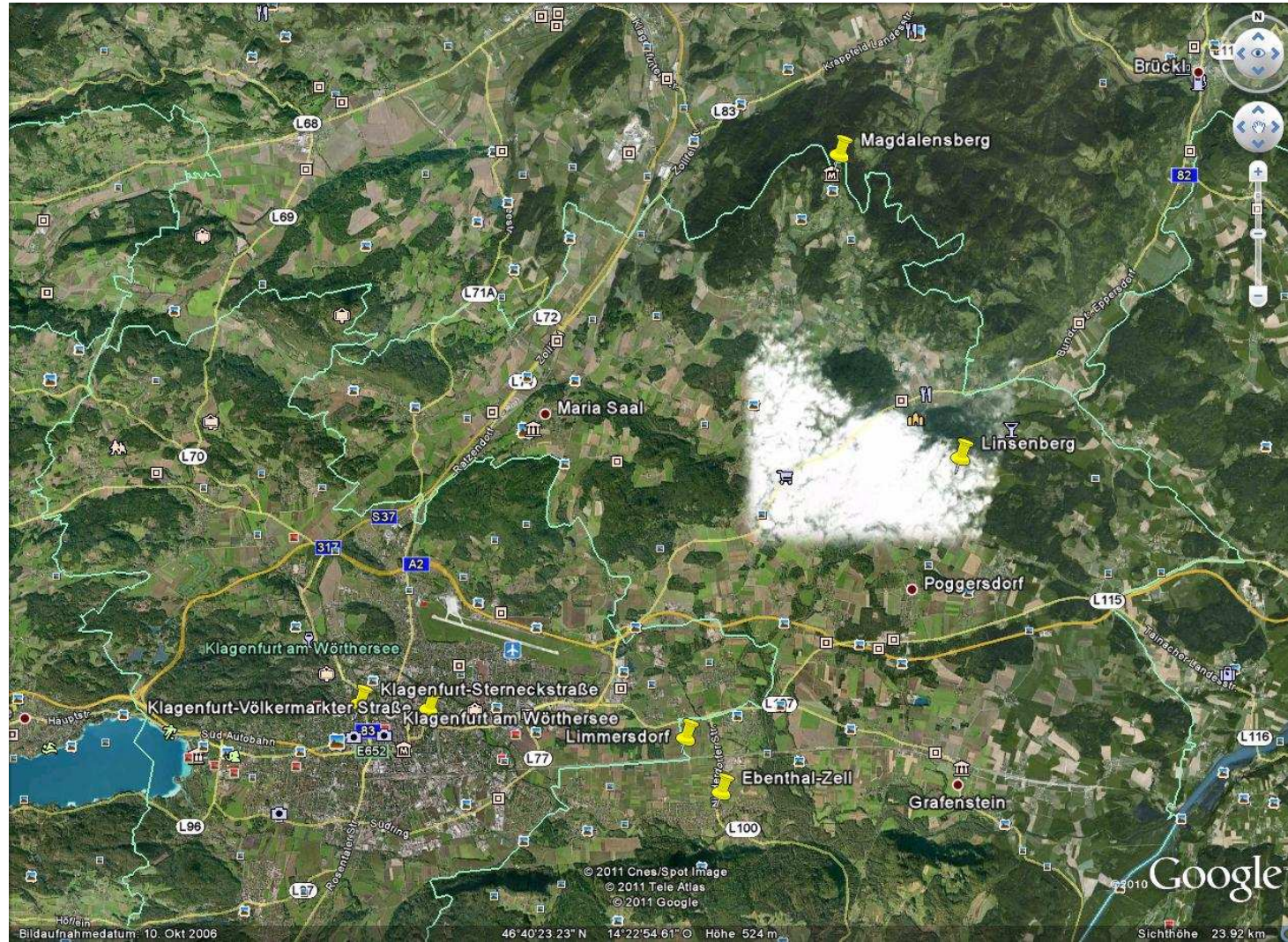
Amt der Kärntner Landesregierung
Abteilung 8
(Kompetenzzentrum Umwelt, Wasser und Naturschutz)
UA Ökologie und Monitoring

OVERVIEW „AQ-Measurements“



station / timetable	continously	from 8.11.2010 continously	from 20.12.2010 till end of 2011	from 13.1.2011 till 15.3.2011 & from 18.7.2011 till 1.8.2011
Klagenfurt-Völkermarkter Straße	PM10, NO2, NO, NOx, CO, Benzol, B(a)P	Aethalometer (Aerosol)	---	HVS (Analysis TU-Vienna)
Klagenfurt-Sterneckstraße (Koschatstraße)	PM10, PM2,5, NO2, NO, NOx, SO2, CO, O3	---	NH3-PS	---
Ebenthal-Zell	PM10, NO2, NO, NOx, SO2, CO, B(a)P	Aethalometer (Aerosol)	---	HVS/LVS (Analysis TU-Vienna)
Limmersdorf	PM10, PM2,5, PM 1, NO2, NO, NOx,	---	NH3-PS	HVS (Analysis TU-Vienna)
Linsenberg	---	---	NH3-PS	---
Magdalensberg	---	---	NH3-PS	---

MAP „AQ-Measurements“



OVERVIEW „MET-Measurements“



station	height [m ASL]	latitude [deg]	longitude [deg]	parameters	time resolution	quality check [yes/no]
Ebenthal-Zell	422	46,610	14,390	WIRI,WIGE,BOE,LUTE,LUFE	1/2 h	no
RASS Limmersdorf	426	46,620	14,389	see below		
KLAGENFURT - Koschatstr.	440	46,626	14,297	WIRI,WIGE,BOE,LUTE,LUFE	1/2 h	no
KLAGENFURT - Völkerm. Str.	445	46,620	14,317	WIRI,WIGE,BOE,LUTE,LUFE	1/2 h	no
TP Flughafen*	450	46,650	14,330	WIRI,WIGE,BOE,LUTE,LUFE,GSTR	1/2 h	no
KLAGENFURT - Kreuzbergl	550	46,631	14,293	WIRI,WIGE,BOE,LUTE,LUFE	1/2 h	no
TP Eberdorf	660	46,713	14,286	WIRI,WIGE,BOE,LUTE,LUFE,GSTR	1/2 h	no
TP Göriach	840	46,721	14,417	WIRI,WIGE,BOE,LUTE,LUFE	1/2 h	no
TP Magdalensberg	1050	46,730	14,427	WIRI,WIGE,BOE,LUTE,LUFE,GSTR	1/2 h	no

WIRI ... wind direction

WIGE ... wind speed

BOE ... maximum 2s peak gust

LUTE ... air temperature

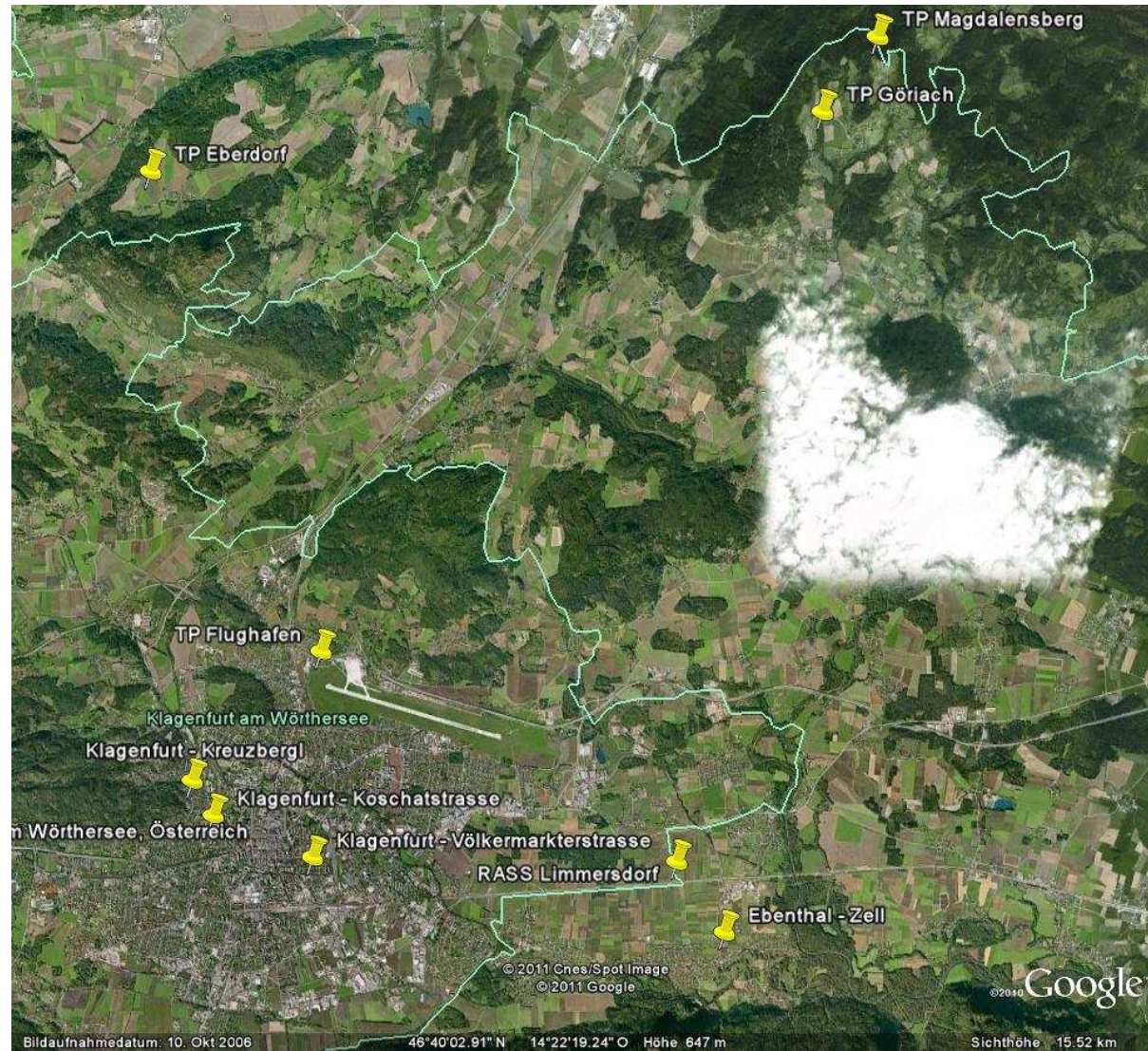
LUFE ... air humidity

GSTR ... global radiation

RASS ... temperature profile up to about 500 m ASL, 3D wind up to 1000 m ASL and turbulent wind components u^* , v^* , w^*

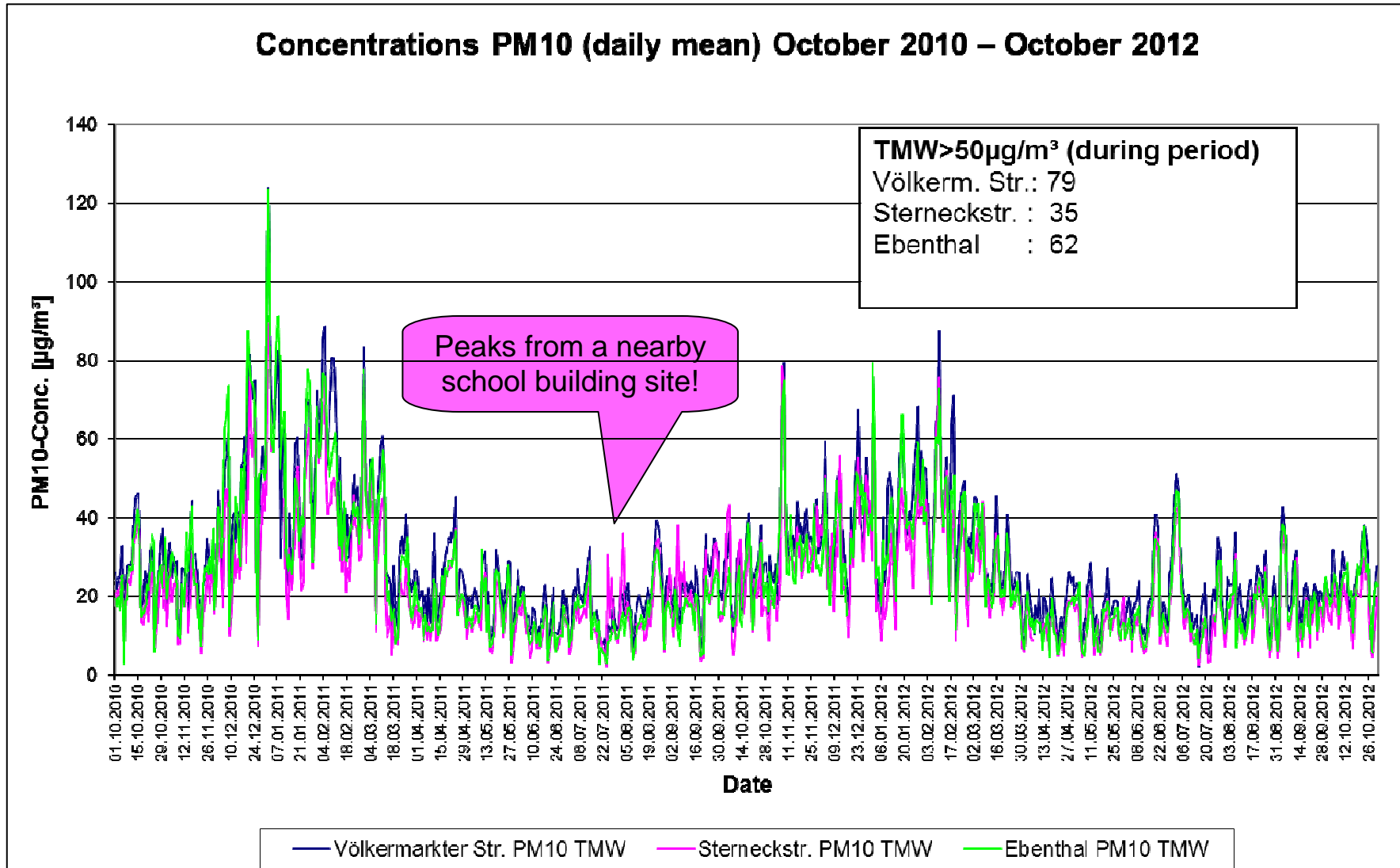
* TP Flughafen is provided by the ZAMG. Quality checked measurements with a temporal resolution of 10 minutes can be ordered.

MAP „MET-Measurements“



DIAGRAMS

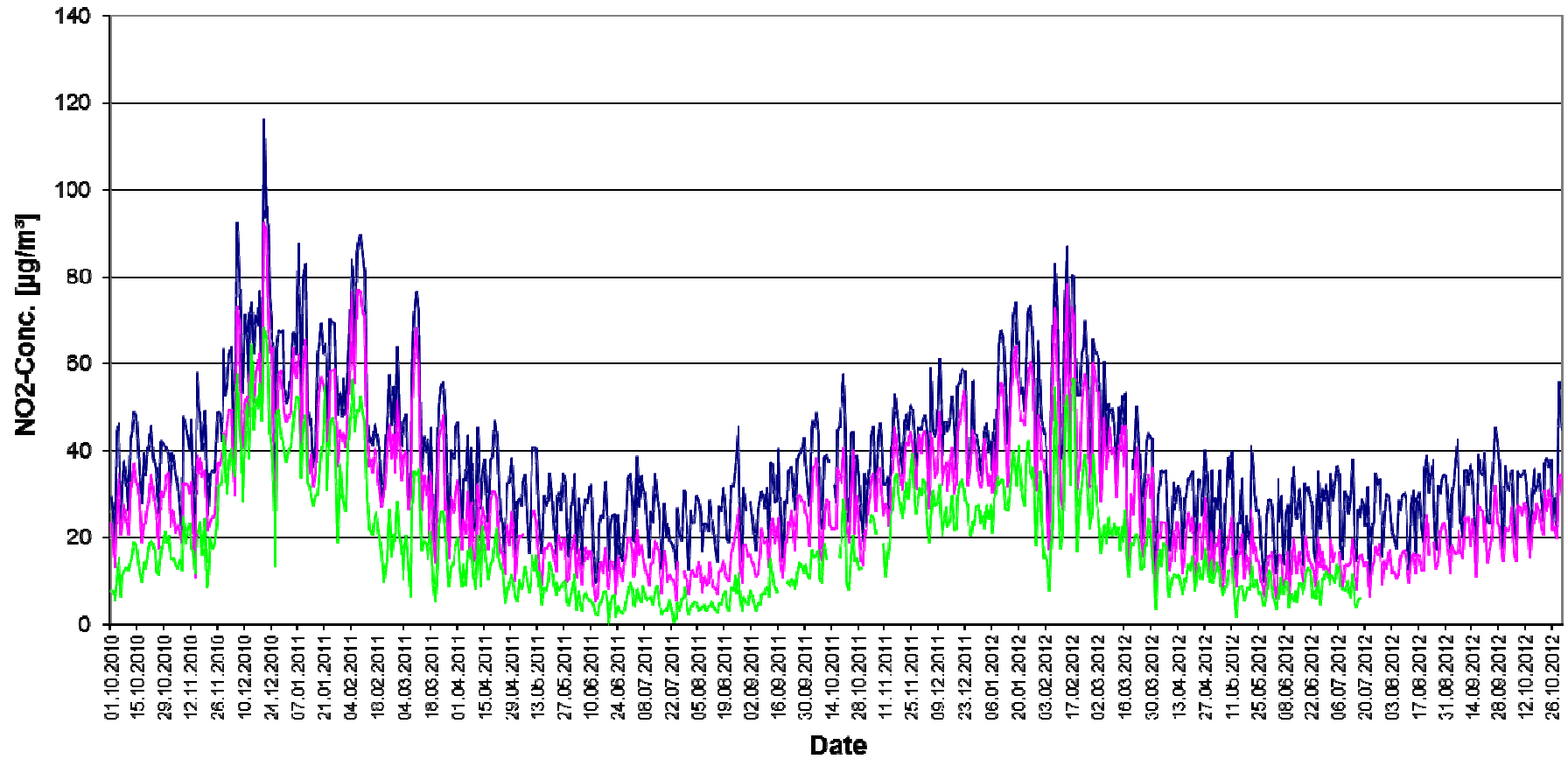
Concentrations PM10 (daily mean) October 2010 – October 2012



DIAGRAMS

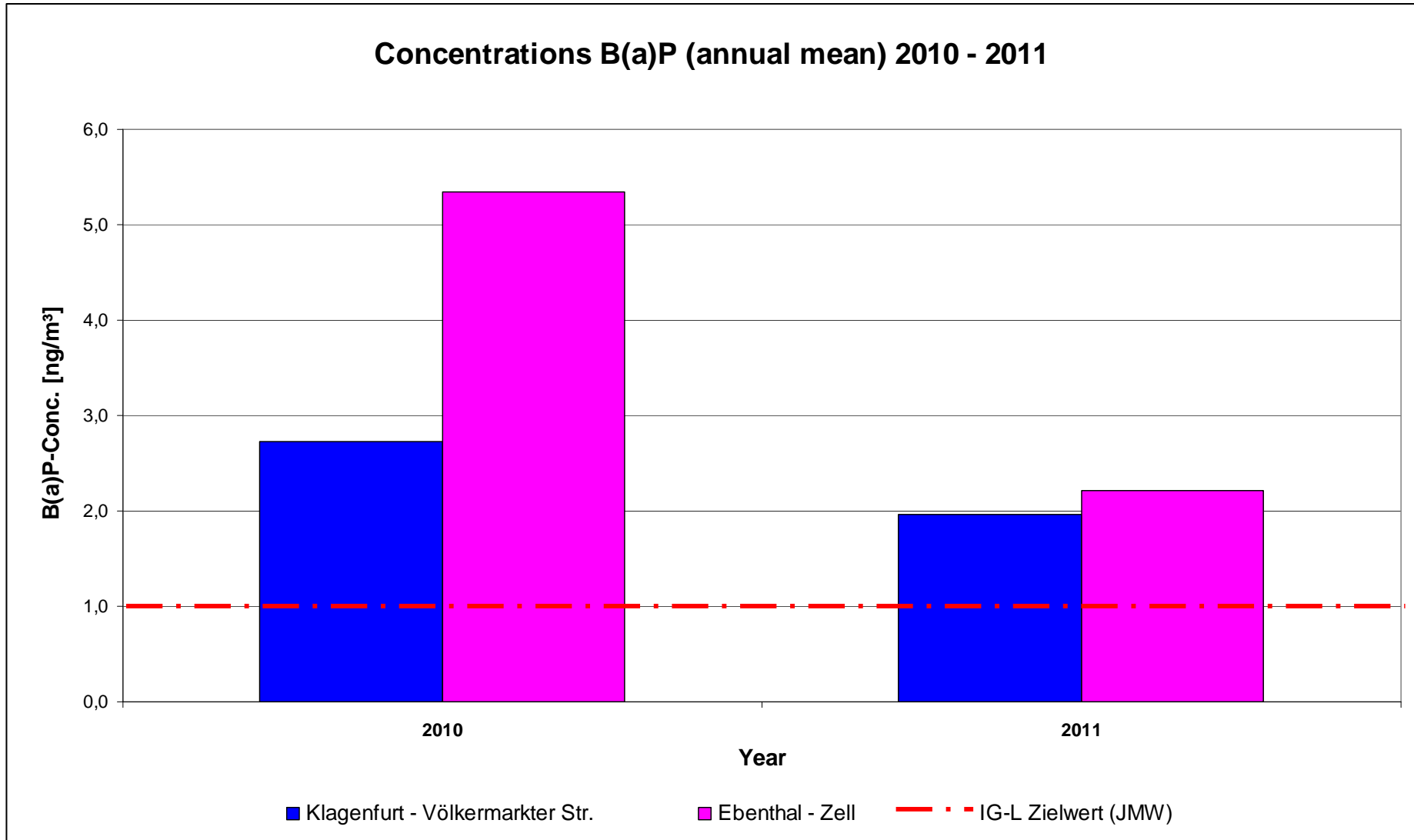


Concentrations NO2 (daily mean) October 2010 – October 2012

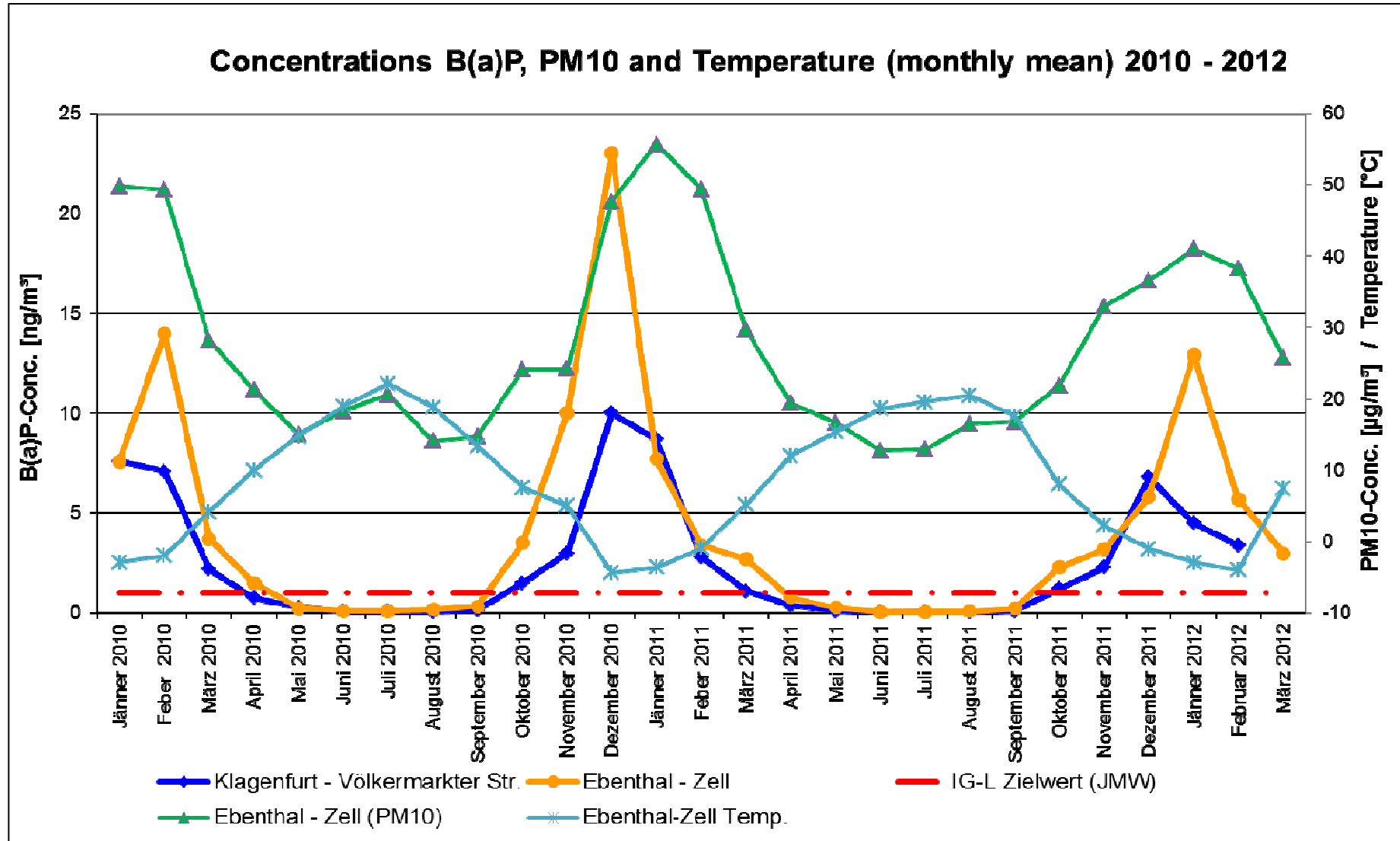


— Völkermarkter Str. NO2 TMW — Sterneckstr. NO2 TMW — Ebenthal NO2 TMW

DIAGRAMS



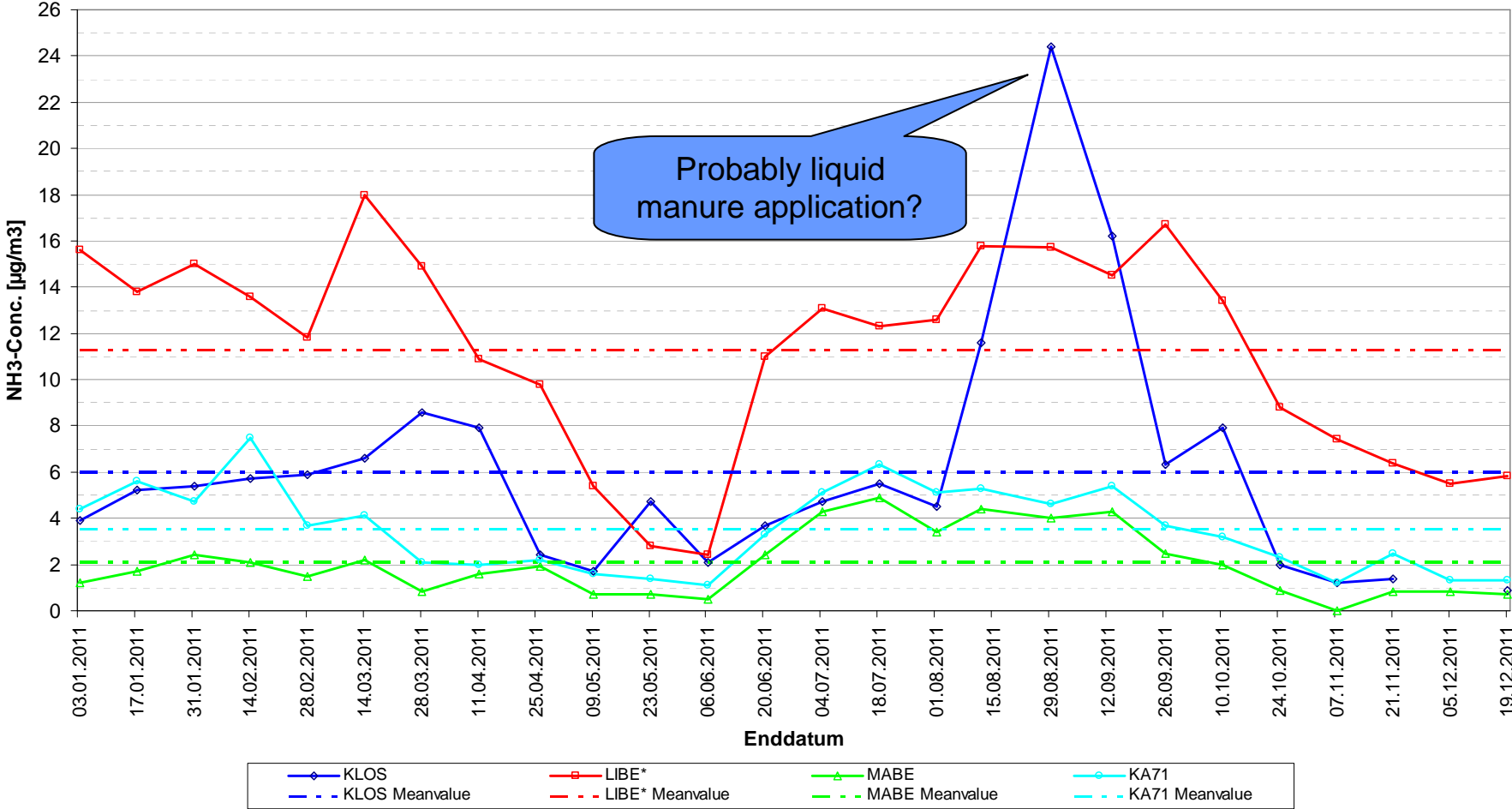
DIAGRAMS



DIAGRAMS



Concentrations NH3 (14-days-period) 20.12.2010 – 19.12.2011



*.. reference station with several pig fattening farms in the neighborhood

Thank you very much for your attention!



Amt der Kärntner Landesregierung

Abteilung 8
(Kompetenzzentrum Umwelt, Wasser und Naturschutz)
UA Ökologie und Monitoring

www.umwelt.ktn.gv.at/luft/index.htm